

FILE COPY
DO NOT REMOVE

Extension Bulletin No. 32

February, 1929

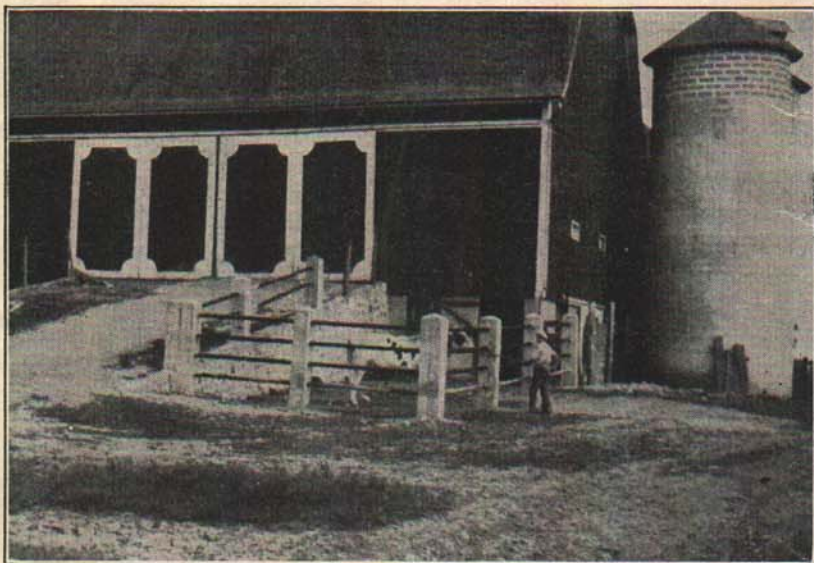
Bull Pen and Safety Breeding Chute

by

GEORGE GIRRBACH ✓
Dairy Extension Specialist

and

F. E. FOGLE ✓
Asst. Prof. Agricultural Engineering

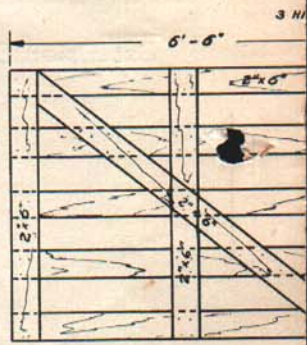
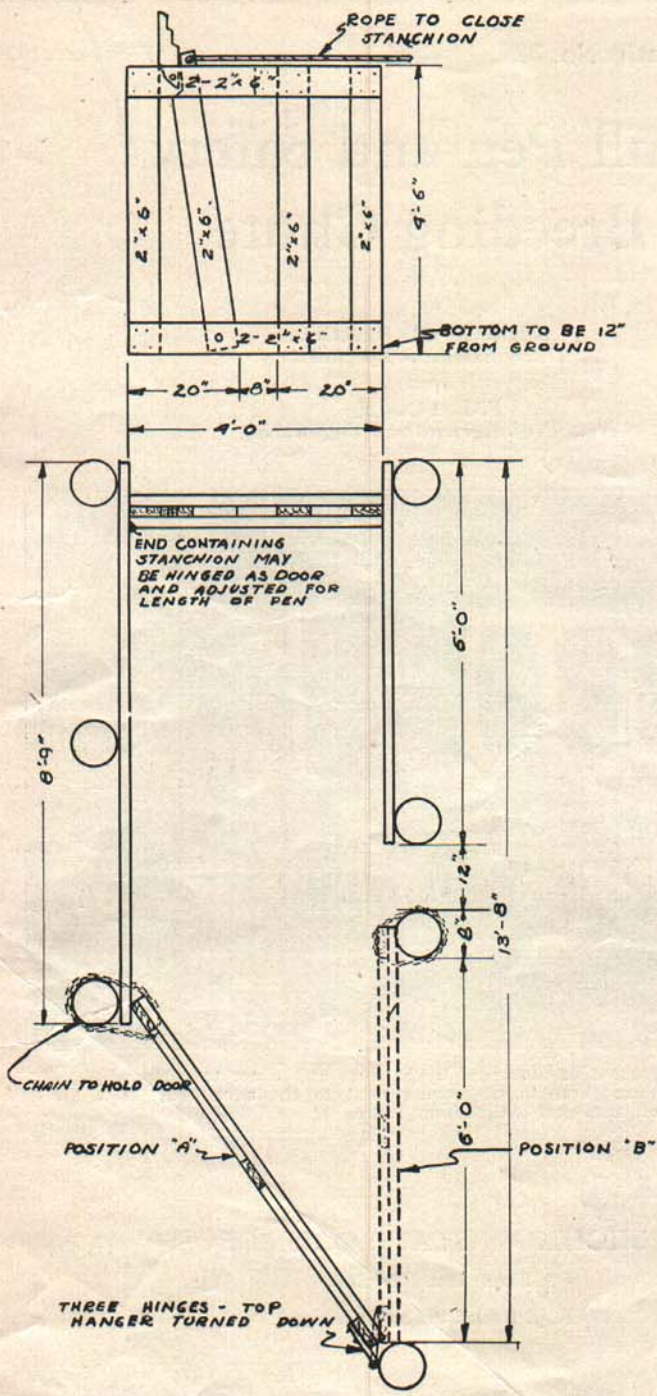


This pen constructed of discarded boiler flues and concrete posts with a safety breeding chute in the corner next to the barn provides a permanent, safe and satisfactory means of confining the bull.

MICHIGAN STATE COLLEGE

Extension Division

R. J. BALDWIN, Director



DOOR BETWEEN BULL AND BREEDING

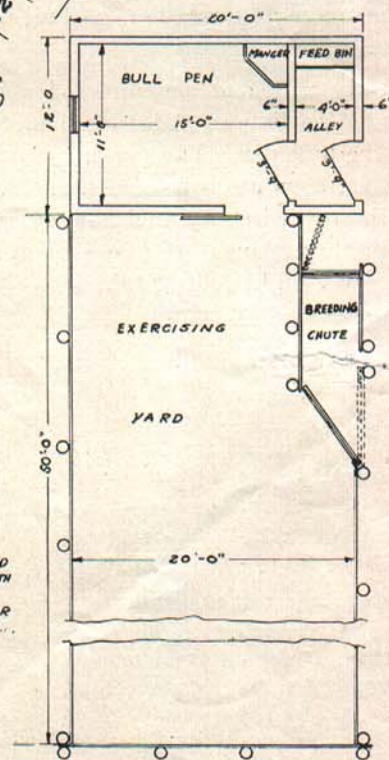
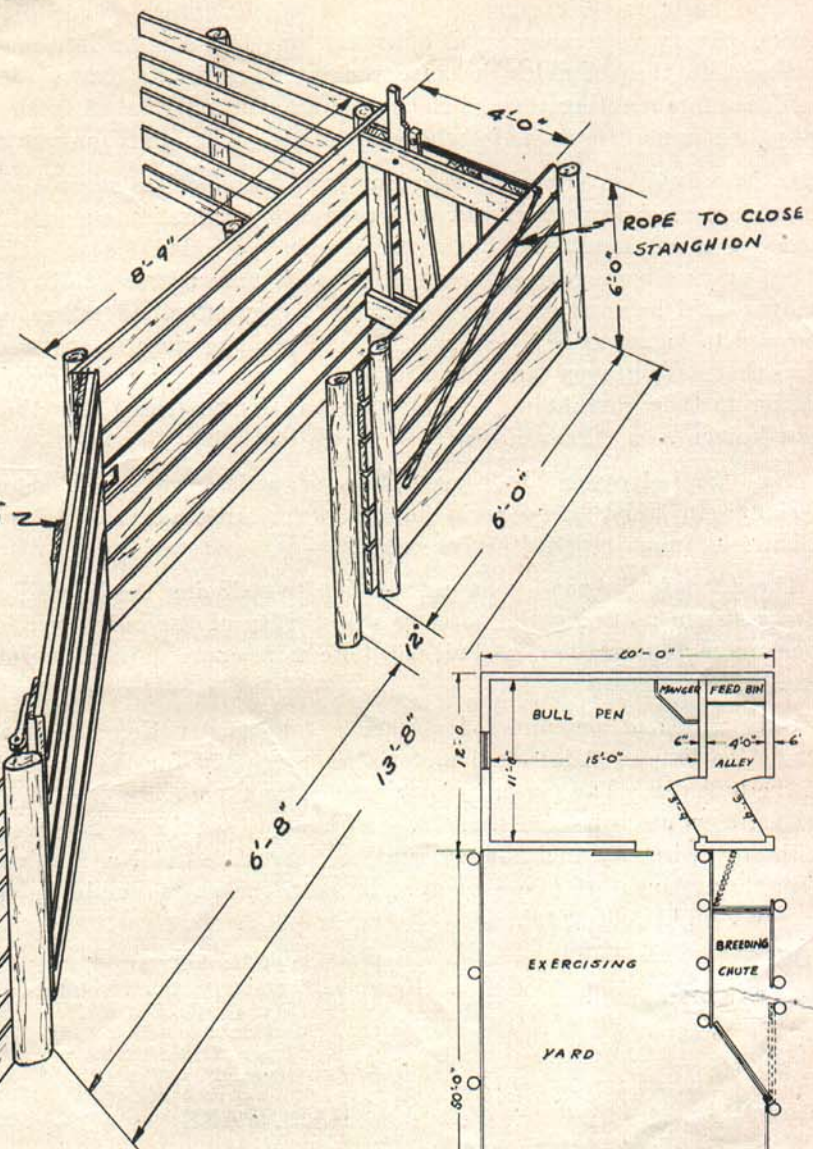
PEN TO BE IN CORNER BULL YARD



YARD
PEN

POSITION 'A' Z

BUILT
UP
OF



AT RIGHT:-
BULL PEN AND
EXERCISING YARD WITH
BREEDING CHUTE
LOCATED IN CORNER
OF EXERCISING YARD..

Good bulls are necessary for the permanent improvement of dairy herds. Every year many good bulls that are just coming into maturity are sent to the shambles, because their owners do not have adequate facilities for handling them. Their places are usually taken in the herd by young immature animals, whose breeding qualities are unknown.

It is only by comparing the type and production records of the daughters of a dairy bull with the type and production records of the dams of these daughters that the real value of a bull becomes known. In using this basis of measurement, a bull's transmitting ability is not known until he is about five years old. Every effort, therefore, should be used to locate as early as possible and prolong the usefulness of the sires that have proven themselves capable of transmitting high producing ability to their daughters. A bull that has demonstrated this ability is now known as a "Proven Sire."

The "Safe Keeper" bull pen, plans of which are herein shown, is designed to assist breeders in handling the large nervous dairy bulls with a minimum risk to the caretaker.

These "Safe Keeper" pens, in addition to reducing the handling risk, also assist in retaining the potency and virility of the bulls by allowing more room and exercise. A bull will take more exercise in a long narrow pen.

Only sufficient amounts of materials for constructing the breeding chute are listed. Additional material is necessary for the construction of the bull pen. The pen may be built of plank, concrete, and iron pipe, or No. 9 woven wire fencing. The wire fence should be five feet high with stay wires six inches apart and be constructed of No. 9 galvanized wire throughout. If plank or wire is used, the posts should be spaced not over eight feet apart.

POSTS

7 - 8" to 8" top 9' long

LUMBER

Large Gate

5 pcs. 2" x 6" - 6'6" cross pieces
3 pcs. 2" x 6" - 5'0" uprights
1 pc. 2" x 6" - 10'0" brace

Front Gate and Stanchion

4 pcs. 2" x 6" - 4'0" cross pieces
3 pcs. 2" x 6" - 4'6" uprights
1 pc. 2" x 6" - 5'0" stanchion

Side of Chute

2" plank to build solid two walls
6' x 6' and 6' x 8'9"
To cut above will require
7 pcs. 2" x 6" x 12'
9 pcs. 2" x 6" x 14'

HARDWARE

3 - 10" extra heavy screw strap hinges
2 - 8" extra heavy steel strap hinges
1 - 6" extra heavy steel strap hinges
Bolts, washers, and lag screws.
10 lb. - 40d common wire nails
5 lb. - 20d common wire nails