

GROWING BARLEY *in* MICHIGAN

By J. W. Thayer, Jr., and E. E. Down

Field test plots for comparing varieties of barley for malting purposes at East Lansing.



**MICHIGAN STATE COLLEGE : EXTENSION DIVISION
EAST LANSING**

Michigan State College of Agriculture and Applied Science and U. S. Department of Agriculture cooperating.
R. J. Baldwin, Director Extension Division. Printed and distributed under acts of Congress, May 8 and June 30, 1914.

Growing Barley in Michigan

By J. W. THAYER, JR. and E. E. DOWN

Barley and oats are Michigan's two important spring grain crops. The 10-year production (1932-41 average) of each in this state is as follows:

CROP	HARVESTED ACREAGE	TOTAL PRODUCTION (bushels)	ACRE YIELD (bushels)	FARM PRICE	ACRE VALUE
Barley	210,000	4,996,000	24.1	\$0.53	\$12.55
Oats	1,305,000	40,324,000	30.9	.33	10.07

The much larger acreage of oats is due to the wider adaptation of oats to different soils, the greater sensitivity of barley to adverse weather, the greater ease with which oats may be handled in harvest, the superior value of oat straw, and, to some extent, a lack of appreciation of the true value of barley.

A bushel of barley weighs 48 pounds and contains approximately 80 per cent total digestible nutrients. A bushel of oats weighs 32 pounds with total digestible nutrients of approximately 70 per cent. Hence, a 40-bushel yield of barley is equivalent in feeding value to about 68 bushels of oats.

USES OF BARLEY

Feeding—The most important use of barley is as a feed for livestock. Any good barley is acceptable for this purpose, and off-grade barley may still be used for feed.

Experiments have shown that for dairy cattle ground barley may replace corn pound for pound in the concentrate ration with equally satisfactory results. Similar results have been obtained in the feeding of steers. Sheep likewise can use barley rather than corn, and in this case the whole grain may be used satisfactorily. Hogs generally do slightly better on corn than on barley, but often hogs can be fed out on barley and marketed early, bringing higher returns to the feeder than would be the case if he waited for the new corn crop. Barley is generally considered a "heavy" feed for horses, but when properly mixed with bran or oats it may form at least one-third of the grain ration. Chickens do not readily eat whole barley but it may be used to supplement or largely replace corn in the mash feed.

Scabby barley may cause illness if fed to hogs or horses, but it may safely be fed to cattle and sheep.

Malting—If barley is grown as a cash crop, the best market is to the malting trade. American maltsters want a six-row barley of moderate protein content with kernels that are mellow or starchy rather than steely in texture.

The grain should be of high test weight but it must not be threshed too closely lest the germ be injured. Malting barley must be of high and of uniform germination because the malting of barley is a germinating process. Pure seed of varieties acceptable to the malting trade is essential to the production of the kind of barley that will command a premium price.

Pearling — Pearled barley is made by the dehulling of the grain. It is used for making soup. High-quality grain is required, but the amount used is relatively small compared with that used for malting and food.

SOIL REQUIREMENT

1. For best results barley should be grown on a level, well-drained, fertile loam, silt loam, or clay loam soil.

In Michigan such soils are found most commonly in the Saginaw valley, the "Thumb" district, and the southeastern corner of the state. Although the barley acreage is greatest in those areas, the crop does equally well wherever similar soil and climatic conditions prevail.

2. Sandy soils or soils low in fertility are unsuited for barley growing. On such soils barley straw will generally be short, the grain light in weight, and the crop unprofitable.

BARLEY IN THE ROTATION

1. It is best that barley be grown in the rotation following such cleanly cultivated row crops as corn, beans, soybeans, sugar beets, or potatoes.

2. Barley is conveniently used as a companion crop for seedings of alfalfa, the clovers, and forage grasses thereby providing returns from the land while the forage seedings are being established.

FERTILIZERS

1. On loam, silt loam, and clay loam soils where no clover, alfalfa, or manure has been used recently a desirable fertilizer application for barley is 150 to 250 pounds an acre of a complete fertilizer such as 4-16-4, 2-16-8, or 2-12-6.

2. In case alfalfa, clover, or manure has been used recently the fertilizer application may well be changed to 150 to 250 pounds an acre of 0-20-0.

3. If barley is being used as a companion crop for clover, alfalfa, or grass seedings, the fertilizer should cover requirements of the forage crop to be grown in subsequent years as well as the immediate barley crop. Thus, a good fertilizer for barley and a seeding of alfalfa which is expected to be used for 3 or 4 years is 400 pounds an acre of 0-20-20.

For more detailed information on fertilizers for barley growing in Michigan, consult the most recent fertilizer recommendations of the Soils Science Depart-

ment of Michigan State College (Extension Bulletin 159), obtainable from your local county agricultural agent or directly from Michigan State College.

VARIETIES

1. *Wisconsin 38*, also called Wisconsin Barbless is the most commonly grown barley in Michigan. This is a smooth-awned, six-rowed, white barley, rather late in maturity. Its straw is only moderately strong, but it yields exceptionally well, and makes excellent feed. When pure and of good quality, it is acceptable for malting purposes.

2. *Spartan* is a high-yielding, two-rowed, white barley with smooth awns, sparse foliage, and a stiff straw. Its stiff straw, sparse foliage and early maturity make this variety of exceptional value as a companion crop for seedings. Because it is a two-rowed barley it is not acceptable to the malting trade.

3. *Pure seed* of these varieties is produced under certification by members of the Michigan Crop Improvement Association.

4. *Winter barley* is grown to some extent in Michigan. Winter barley matures early and, when it survives the winter, it often outyields spring barley, especially on the lighter soils and in the most southern counties. However, none of the present varieties of winter barley is nearly so hardy as the better varieties of winter wheat. Winter killing of fall-sown barley is too common. Growers wishing to grow winter barley should plant it around September 1 and should be prepared to substitute a spring-sown crop should the winter be severe.

SEED TREATMENT

1. New Improved Ceresan dust, when used according to directions furnished by the manufacturer, will control covered smut, one form of loose smut, and some other common seed-borne barley diseases.

2. Manufacturer's recommendations must be followed carefully, because an over-dosage of Ceresan may injure germination of the seed. Ceresan is a *poison*. It must be kept away from children. Treated grain must not be fed. Breathing the dust will cause illness, hence it should be applied in an open place or the worker should wear an aspirator while applying it.

TIME OF PLANTING

1. To obtain maximum yields, barley should be planted as soon as the land can be worked in the spring.

2. In the barley-producing areas of the state, barley planting should be completed by the first of May. Barley planted later than the first week of May stands a poor chance of producing profitable returns.

SEEDBED PREPARATION

1. Land which is to be planted to barley does not need to be plowed unless there is excessive plant refuse or sod to be turned under.

2. Following a clean-cultivated crop, the seedbed should be prepared by thorough disking and dragging.

3. When plowing is necessary, it should be done in the fall so as to insure a firm seedbed and earlier planting in the spring.

4. Cultipacking, following planting is a good practice. It is beneficial to the barley crop and especially so, to any seedings made with it.

RATE OF SEEDING

1. *Wisconsin 38* usually does best when planted at the rate of $1\frac{1}{2}$ to 2 bushels per acre.

2. *Spartan* barley has a larger grain than *Wisconsin 38*, and it should be planted in the amount of 2 to $2\frac{1}{2}$ bushels per acre.



Fig. 1. Determining the best rate for seeding barley, East Lansing.

3. Where it has been difficult to obtain good seedings of forage crops with barley, a lighter rate (*Wisconsin 38*, 1 bushel, *Spartan*, $1\frac{1}{2}$ bushel) of seeding is a good practice.

4. The general belief among growers that barley should be planted at a heavier rate on heavy soils and a lighter rate on light soils is not verified by experimental results.

DEPTH OF PLANTING

1. Barley should be planted as shallow as possible — but in moist soil.
2. On heavy soils the seed should be placed from 1 to 1½ inches deep.
3. On light soils the seed should be planted from 1½ to 2 inches deep.
4. Deep planting does not cause the plant to root deep in the soil or to be more drouth-resistant. Barley seedlings form their crown and permanent root system close to the surface of the soil regardless of the depth of planting.

HARVESTING FOR QUALITY

1. **Binder Harvest** — The grain should be cut with the binder as soon as it has completely ripened. When ready to cut, the kernels will be in the medium hard dough stage and the straw will have just nicely turned yellow.
2. **Windrowing** — When the windrow method of harvesting is used, the grain should be cut at the same maturity as for the binder method of harvest.
3. **Combining** — Grain must be dry (down to 14 per cent moisture) before it is cut with a combine if the threshed grain is going to keep in the bin without heating and spoiling.



Fig. 2. Barley should be completely ripe when it is cut with the binder.

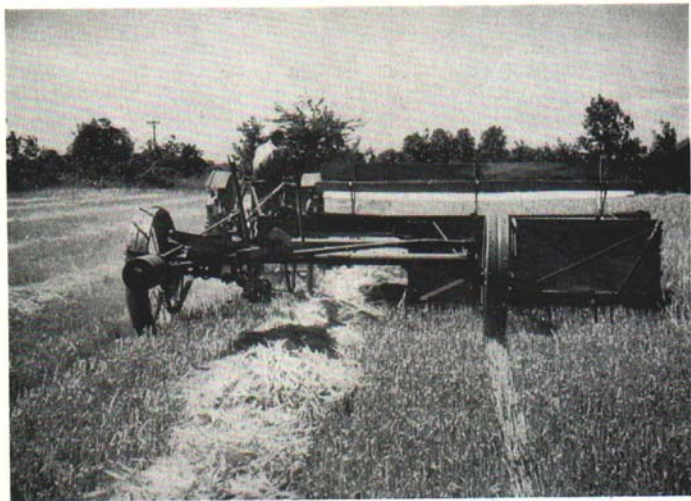


Fig. 3. Cutting and windrowing barley with a windrowing machine.

CARE OF GRAIN AFTER CUTTING

1. **Binder-cut Grain**—The bundles from the binder should be shocked in open shocks. Barley usually dries better, and there is less danger of shock damage when the open, rather than the round-capped, shock is used. When the grain is thoroughly dry, it may be threshed from the field, stacked, or stored in the mow.

2. **Windrowed Grain**—The grain should be left in the windrow until thoroughly dry. Under good drying conditions, this requires from 2 to 3 days. After the grain is thoroughly dry it is picked up by the combine and threshed.

3. Grain cut with a combine is threshed in the one operation.

THRESHING

Quality of the grain is greatly affected by the threshing operations. Investigations have shown that high-quality barley is obtained more often when threshing is done by grain-separator than when a combine is used. These studies also showed that the poor quality of combined barley is due mainly to improper combine operations. The principles of operation of the two types of machines is similar. The following suggestions apply to both types of machines.

1. The operator must know his machine in order to make needed adjustments, quickly and satisfactorily.
2. Grain should be threshed immediately when dry (14 per cent moisture). Grain allowed to remain in the field after reaching 14 per cent moisture (in the shock, windrow, or standing for combine) becomes discolored and decreases in test weight. This change is caused by dews and rains.
3. The speed of cylinder and set of concaves should be adjusted to prevent cracking and skinning of kernels. Eliminate all end-play in the cylinder.
4. The wind should be adjusted to remove light seeds, chaff and foreign material.
5. While threshing, *check frequently* the condition of the grain coming from the machine and make adjustments of speed or set of concaves whenever necessary.

STORAGE

1. Grain with 14 per cent moisture may be stored without danger of spoiling.
2. Grain with moisture in excess of 14 per cent should be stored in shallow, well-ventilated bins and moved repeatedly until it is dry enough to be safe from heating injury.

BARLEY REFERENCES

Extension Bulletin 191—Dust Treatment for Barley Diseases

Extension Bulletin 214—Harvesting Better Barley

Farm Crops Department Reprints:

1. Combine vs. Binder Separator Harvesting for Quality Barley
2. Improving the Quality and Yield of Michigan Malting Barleys
3. Rate of Seeding for Barley