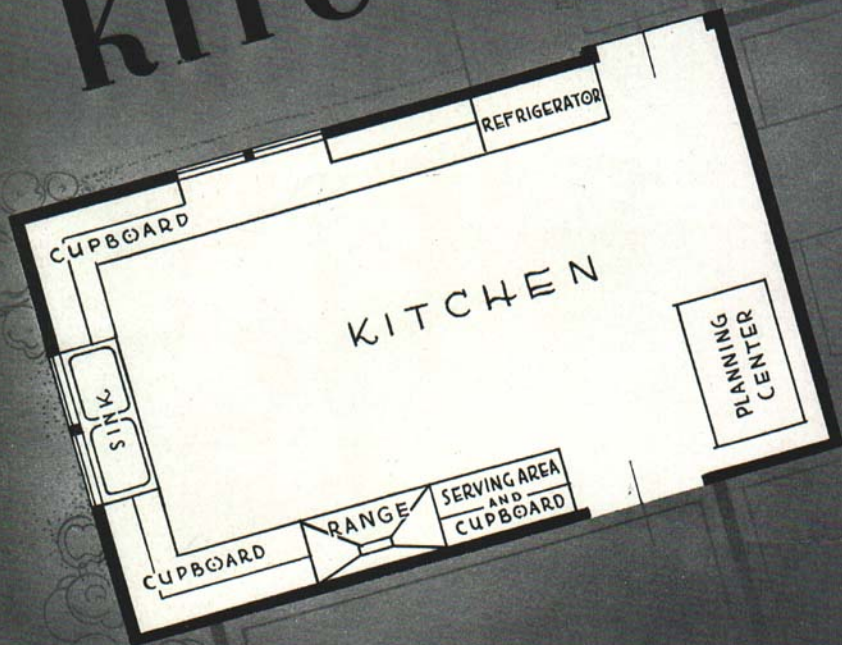


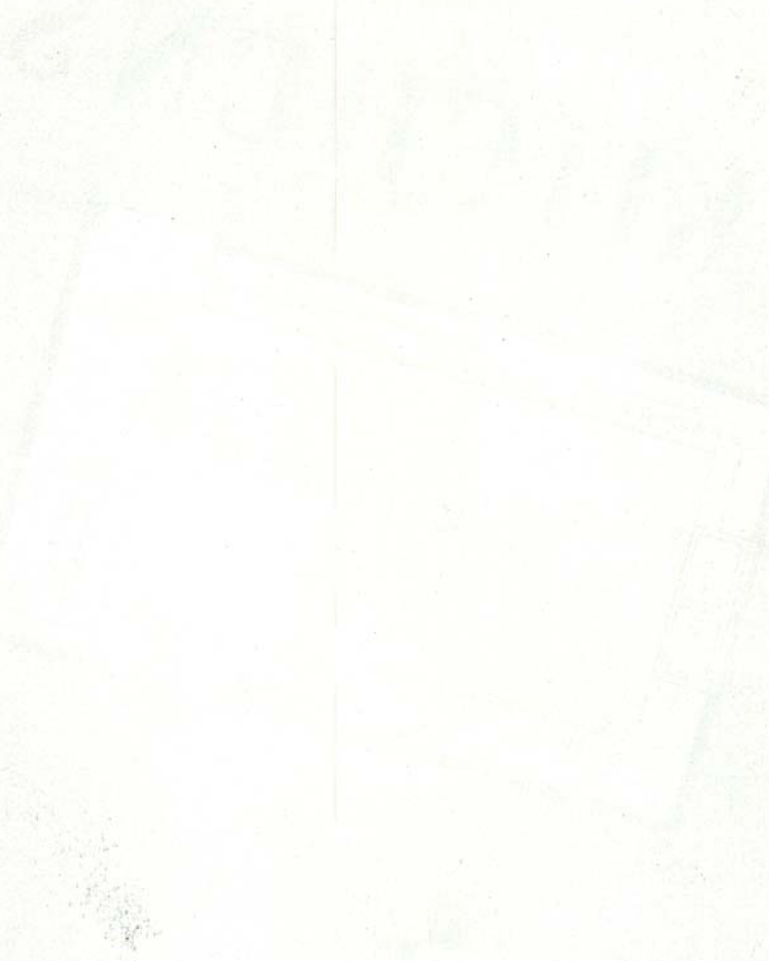
# Convenient KITCHENS



MICHIGAN STATE COLLEGE

EXTENSION DIVISION

EAST LANSING



## CONTENTS

	Page
Factors Determining Convenience .....	5
Location of Kitchen .....	5
Size and Shape .....	5
Openings .....	6
Water Supply .....	7
Equipment .....	8
Kitchen Centers .....	9
Food Preparation Center .....	9
Cooking and Serving Center .....	9
Clearing up and Dishwashing Center .....	12
Sink .....	12
Business or Planning Center .....	13
Dining Center .....	13
Laundry and Other Centers .....	14
Arrangement of Centers .....	15
Storage Cupboards .....	30

CONTENTS

Introduction	1
Chapter I	10
Chapter II	25
Chapter III	40
Chapter IV	55
Chapter V	70
Chapter VI	85
Chapter VII	100
Chapter VIII	115
Chapter IX	130
Chapter X	145
Chapter XI	160
Chapter XII	175
Chapter XIII	190
Chapter XIV	205
Chapter XV	220
Chapter XVI	235
Chapter XVII	250
Chapter XVIII	265
Chapter XIX	280
Chapter XX	295
Chapter XXI	310
Chapter XXII	325
Chapter XXIII	340
Chapter XXIV	355
Chapter XXV	370
Chapter XXVI	385
Chapter XXVII	400
Chapter XXVIII	415
Chapter XXIX	430
Chapter XXX	445
Chapter XXXI	460
Chapter XXXII	475
Chapter XXXIII	490
Chapter XXXIV	505
Chapter XXXV	520
Chapter XXXVI	535
Chapter XXXVII	550
Chapter XXXVIII	565
Chapter XXXIX	580
Chapter XL	595
Chapter XLI	610
Chapter XLII	625
Chapter XLIII	640
Chapter XLIV	655
Chapter XLV	670
Chapter XLVI	685
Chapter XLVII	700
Chapter XLVIII	715
Chapter XLIX	730
Chapter L	745
Chapter LI	760
Chapter LII	775
Chapter LIII	790
Chapter LIV	805
Chapter LV	820
Chapter LVI	835
Chapter LVII	850
Chapter LVIII	865
Chapter LIX	880
Chapter LX	895
Chapter LXI	910
Chapter LXII	925
Chapter LXIII	940
Chapter LXIV	955
Chapter LXV	970
Chapter LXVI	985
Chapter LXVII	1000
Chapter LXVIII	1015
Chapter LXIX	1030
Chapter LXX	1045
Chapter LXXI	1060
Chapter LXXII	1075
Chapter LXXIII	1090
Chapter LXXIV	1105
Chapter LXXV	1120
Chapter LXXVI	1135
Chapter LXXVII	1150
Chapter LXXVIII	1165
Chapter LXXIX	1180
Chapter LXXX	1195
Chapter LXXXI	1210
Chapter LXXXII	1225
Chapter LXXXIII	1240
Chapter LXXXIV	1255
Chapter LXXXV	1270
Chapter LXXXVI	1285
Chapter LXXXVII	1300
Chapter LXXXVIII	1315
Chapter LXXXIX	1330
Chapter LXXXX	1345
Chapter LXXXXI	1360
Chapter LXXXXII	1375
Chapter LXXXXIII	1390
Chapter LXXXXIV	1405
Chapter LXXXXV	1420
Chapter LXXXXVI	1435
Chapter LXXXXVII	1450
Chapter LXXXXVIII	1465
Chapter LXXXXIX	1480
Chapter LXXXXX	1495
Chapter LXXXXXI	1510
Chapter LXXXXXII	1525
Chapter LXXXXXIII	1540
Chapter LXXXXXIV	1555
Chapter LXXXXXV	1570
Chapter LXXXXXVI	1585
Chapter LXXXXXVII	1600
Chapter LXXXXXVIII	1615
Chapter LXXXXXIX	1630
Chapter LXXXXXX	1645
Chapter LXXXXXXI	1660
Chapter LXXXXXXII	1675
Chapter LXXXXXXIII	1690
Chapter LXXXXXXIV	1705
Chapter LXXXXXXV	1720
Chapter LXXXXXXVI	1735
Chapter LXXXXXXVII	1750
Chapter LXXXXXXVIII	1765
Chapter LXXXXXXIX	1780
Chapter LXXXXXXX	1795
Chapter LXXXXXXXI	1810
Chapter LXXXXXXXII	1825
Chapter LXXXXXXXIII	1840
Chapter LXXXXXXXIV	1855
Chapter LXXXXXXXV	1870
Chapter LXXXXXXXVI	1885
Chapter LXXXXXXXVII	1900
Chapter LXXXXXXXVIII	1915
Chapter LXXXXXXXIX	1930
Chapter LXXXXXXXI	1945
Chapter LXXXXXXXII	1960
Chapter LXXXXXXXIII	1975
Chapter LXXXXXXXIV	1990
Chapter LXXXXXXXV	2005
Chapter LXXXXXXXVI	2020
Chapter LXXXXXXXVII	2035
Chapter LXXXXXXXVIII	2050
Chapter LXXXXXXXIX	2065
Chapter LXXXXXXXI	2080
Chapter LXXXXXXXII	2095
Chapter LXXXXXXXIII	2110
Chapter LXXXXXXXIV	2125
Chapter LXXXXXXXV	2140
Chapter LXXXXXXXVI	2155
Chapter LXXXXXXXVII	2170
Chapter LXXXXXXXVIII	2185
Chapter LXXXXXXXIX	2200
Chapter LXXXXXXXI	2215
Chapter LXXXXXXXII	2230
Chapter LXXXXXXXIII	2245
Chapter LXXXXXXXIV	2260
Chapter LXXXXXXXV	2275
Chapter LXXXXXXXVI	2290
Chapter LXXXXXXXVII	2305
Chapter LXXXXXXXVIII	2320
Chapter LXXXXXXXIX	2335
Chapter LXXXXXXXI	2350
Chapter LXXXXXXXII	2365
Chapter LXXXXXXXIII	2380
Chapter LXXXXXXXIV	2395
Chapter LXXXXXXXV	2410
Chapter LXXXXXXXVI	2425
Chapter LXXXXXXXVII	2440
Chapter LXXXXXXXVIII	2455
Chapter LXXXXXXXIX	2470
Chapter LXXXXXXXI	2485
Chapter LXXXXXXXII	2500
Chapter LXXXXXXXIII	2515
Chapter LXXXXXXXIV	2530
Chapter LXXXXXXXV	2545
Chapter LXXXXXXXVI	2560
Chapter LXXXXXXXVII	2575
Chapter LXXXXXXXVIII	2590
Chapter LXXXXXXXIX	2605
Chapter LXXXXXXXI	2620
Chapter LXXXXXXXII	2635
Chapter LXXXXXXXIII	2650
Chapter LXXXXXXXIV	2665
Chapter LXXXXXXXV	2680
Chapter LXXXXXXXVI	2695
Chapter LXXXXXXXVII	2710
Chapter LXXXXXXXVIII	2725
Chapter LXXXXXXXIX	2740
Chapter LXXXXXXXI	2755
Chapter LXXXXXXXII	2770
Chapter LXXXXXXXIII	2785
Chapter LXXXXXXXIV	2800
Chapter LXXXXXXXV	2815
Chapter LXXXXXXXVI	2830
Chapter LXXXXXXXVII	2845
Chapter LXXXXXXXVIII	2860
Chapter LXXXXXXXIX	2875
Chapter LXXXXXXXI	2890
Chapter LXXXXXXXII	2905
Chapter LXXXXXXXIII	2920
Chapter LXXXXXXXIV	2935
Chapter LXXXXXXXV	2950
Chapter LXXXXXXXVI	2965
Chapter LXXXXXXXVII	2980
Chapter LXXXXXXXVIII	2995
Chapter LXXXXXXXIX	3010
Chapter LXXXXXXXI	3025
Chapter LXXXXXXXII	3040
Chapter LXXXXXXXIII	3055
Chapter LXXXXXXXIV	3070
Chapter LXXXXXXXV	3085
Chapter LXXXXXXXVI	3100
Chapter LXXXXXXXVII	3115
Chapter LXXXXXXXVIII	3130
Chapter LXXXXXXXIX	3145
Chapter LXXXXXXXI	3160
Chapter LXXXXXXXII	3175
Chapter LXXXXXXXIII	3190
Chapter LXXXXXXXIV	3205
Chapter LXXXXXXXV	3220
Chapter LXXXXXXXVI	3235
Chapter LXXXXXXXVII	3250
Chapter LXXXXXXXVIII	3265
Chapter LXXXXXXXIX	3280
Chapter LXXXXXXXI	3295
Chapter LXXXXXXXII	3310
Chapter LXXXXXXXIII	3325
Chapter LXXXXXXXIV	3340
Chapter LXXXXXXXV	3355
Chapter LXXXXXXXVI	3370
Chapter LXXXXXXXVII	3385
Chapter LXXXXXXXVIII	3400
Chapter LXXXXXXXIX	3415
Chapter LXXXXXXXI	3430
Chapter LXXXXXXXII	3445
Chapter LXXXXXXXIII	3460
Chapter LXXXXXXXIV	3475
Chapter LXXXXXXXV	3490
Chapter LXXXXXXXVI	3505
Chapter LXXXXXXXVII	3520
Chapter LXXXXXXXVIII	3535
Chapter LXXXXXXXIX	3550
Chapter LXXXXXXXI	3565
Chapter LXXXXXXXII	3580
Chapter LXXXXXXXIII	3595
Chapter LXXXXXXXIV	3610
Chapter LXXXXXXXV	3625
Chapter LXXXXXXXVI	3640
Chapter LXXXXXXXVII	3655
Chapter LXXXXXXXVIII	3670
Chapter LXXXXXXXIX	3685
Chapter LXXXXXXXI	3700
Chapter LXXXXXXXII	3715
Chapter LXXXXXXXIII	3730
Chapter LXXXXXXXIV	3745
Chapter LXXXXXXXV	3760
Chapter LXXXXXXXVI	3775
Chapter LXXXXXXXVII	3790
Chapter LXXXXXXXVIII	3805
Chapter LXXXXXXXIX	3820
Chapter LXXXXXXXI	3835
Chapter LXXXXXXXII	3850
Chapter LXXXXXXXIII	3865
Chapter LXXXXXXXIV	3880
Chapter LXXXXXXXV	3895
Chapter LXXXXXXXVI	3910
Chapter LXXXXXXXVII	3925
Chapter LXXXXXXXVIII	3940
Chapter LXXXXXXXIX	3955
Chapter LXXXXXXXI	3970
Chapter LXXXXXXXII	3985
Chapter LXXXXXXXIII	4000
Chapter LXXXXXXXIV	4015
Chapter LXXXXXXXV	4030
Chapter LXXXXXXXVI	4045
Chapter LXXXXXXXVII	4060
Chapter LXXXXXXXVIII	4075
Chapter LXXXXXXXIX	4090
Chapter LXXXXXXXI	4105
Chapter LXXXXXXXII	4120
Chapter LXXXXXXXIII	4135
Chapter LXXXXXXXIV	4150
Chapter LXXXXXXXV	4165
Chapter LXXXXXXXVI	4180
Chapter LXXXXXXXVII	4195
Chapter LXXXXXXXVIII	4210
Chapter LXXXXXXXIX	4225
Chapter LXXXXXXXI	4240
Chapter LXXXXXXXII	4255
Chapter LXXXXXXXIII	4270
Chapter LXXXXXXXIV	4285
Chapter LXXXXXXXV	4300
Chapter LXXXXXXXVI	4315
Chapter LXXXXXXXVII	4330
Chapter LXXXXXXXVIII	4345
Chapter LXXXXXXXIX	4360
Chapter LXXXXXXXI	4375
Chapter LXXXXXXXII	4390
Chapter LXXXXXXXIII	4405
Chapter LXXXXXXXIV	4420
Chapter LXXXXXXXV	4435
Chapter LXXXXXXXVI	4450
Chapter LXXXXXXXVII	4465
Chapter LXXXXXXXVIII	4480
Chapter LXXXXXXXIX	4495
Chapter LXXXXXXXI	4510
Chapter LXXXXXXXII	4525
Chapter LXXXXXXXIII	4540
Chapter LXXXXXXXIV	4555
Chapter LXXXXXXXV	4570
Chapter LXXXXXXXVI	4585
Chapter LXXXXXXXVII	4600
Chapter LXXXXXXXVIII	4615
Chapter LXXXXXXXIX	4630
Chapter LXXXXXXXI	4645
Chapter LXXXXXXXII	4660
Chapter LXXXXXXXIII	4675
Chapter LXXXXXXXIV	4690
Chapter LXXXXXXXV	4705
Chapter LXXXXXXXVI	4720
Chapter LXXXXXXXVII	4735
Chapter LXXXXXXXVIII	4750
Chapter LXXXXXXXIX	4765
Chapter LXXXXXXXI	4780
Chapter LXXXXXXXII	4795
Chapter LXXXXXXXIII	4810
Chapter LXXXXXXXIV	4825
Chapter LXXXXXXXV	4840
Chapter LXXXXXXXVI	4855
Chapter LXXXXXXXVII	4870
Chapter LXXXXXXXVIII	4885
Chapter LXXXXXXXIX	4900
Chapter LXXXXXXXI	4915
Chapter LXXXXXXXII	4930
Chapter LXXXXXXXIII	4945
Chapter LXXXXXXXIV	4960
Chapter LXXXXXXXV	4975
Chapter LXXXXXXXVI	4990
Chapter LXXXXXXXVII	5005
Chapter LXXXXXXXVIII	5020
Chapter LXXXXXXXIX	5035
Chapter LXXXXXXXI	5050
Chapter LXXXXXXXII	5065
Chapter LXXXXXXXIII	5080
Chapter LXXXXXXXIV	5095
Chapter LXXXXXXXV	5110
Chapter LXXXXXXXVI	5125
Chapter LXXXXXXXVII	5140
Chapter LXXXXXXXVIII	5155
Chapter LXXXXXXXIX	5170
Chapter LXXXXXXXI	5185
Chapter LXXXXXXXII	5200
Chapter LXXXXXXXIII	5215
Chapter LXXXXXXXIV	5230
Chapter LXXXXXXXV	5245
Chapter LXXXXXXXVI	5260
Chapter LXXXXXXXVII	5275
Chapter LXXXXXXXVIII	5290
Chapter LXXXXXXXIX	5305
Chapter LXXXXXXXI	5320
Chapter LXXXXXXXII	5335
Chapter LXXXXXXXIII	5350
Chapter LXXXXXXXIV	5365
Chapter LXXXXXXXV	5380
Chapter LXXXXXXXVI	5395
Chapter LXXXXXXXVII	5410
Chapter LXXXXXXXVIII	5425
Chapter LXXXXXXXIX	5440
Chapter LXXXXXXXI	5455
Chapter LXXXXXXXII	5470
Chapter LXXXXXXXIII	5485
Chapter LXXXXXXXIV	5500
Chapter LXXXXXXXV	5515
Chapter LXXXXXXXVI	5530
Chapter LXXXXXXXVII	5545
Chapter LXXXXXXXVIII	5560
Chapter LXXXXXXXIX	5575
Chapter LXXXXXXXI	5590
Chapter LXXXXXXXII	5605
Chapter LXXXXXXXIII	5620
Chapter LXXXXXXXIV	5635
Chapter LXXXXXXXV	5650
Chapter LXXXXXXXVI	5665
Chapter LXXXXXXXVII	5680
Chapter LXXXXXXXVIII	5695
Chapter LXXXXXXXIX	5710
Chapter LXXXXXXXI	5725
Chapter LXXXXXXXII	5740
Chapter LXXXXXXXIII	5755
Chapter LXXXXXXXIV	5770
Chapter LXXXXXXXV	5785
Chapter LXXXXXXXVI	5800
Chapter LXXXXXXXVII	5815
Chapter LXXXXXXXVIII	5830
Chapter LXXXXXXXIX	5845
Chapter LXXXXXXXI	5860
Chapter LXXXXXXXII	5875
Chapter LXXXXXXXIII	5890
Chapter LXXXXXXXIV	5905
Chapter LXXXXXXXV	5920
Chapter LXXXXXXXVI	5935
Chapter LXXXXXXXVII	5950
Chapter LXXXXXXXVIII	5965
Chapter LXXXXXXXIX	5980
Chapter LXXXXXXXI	5995
Chapter LXXXXXXXII	6010
Chapter LXXXXXXXIII	6025
Chapter LXXXXXXXIV	6040
Chapter LXXXXXXXV	6055
Chapter LXXXXXXXVI	6070
Chapter LXXXXXXXVII	6085
Chapter LXXXXXXXVIII	6100
Chapter LXXXXXXXIX	6115
Chapter LXXXXXXXI	6130
Chapter LXXXXXXXII	6145
Chapter LXXXXXXXIII	6160
Chapter LXXXXXXXIV	6175
Chapter LXXXXXXXV	6190
Chapter LXXXXXXXVI	6205
Chapter LXXXXXXXVII	6220
Chapter LXXXXXXXVIII	6235
Chapter LXXXXXXXIX	6250
Chapter LXXXXXXXI	6265
Chapter LXXXXXXXII	6280
Chapter LXXXXXXXIII	6295
Chapter LXXXXXXXIV	6310
Chapter LXXXXXXXV	6325
Chapter LXXXXXXXVI	6340
Chapter LXXXXXXXVII	6355
Chapter LXXXXXXXVIII	6370
Chapter LXXXXXXXIX	6385
Chapter LXXXXXXXI	6400
Chapter LXXXXXXXII	6415
Chapter LXXXXXXXIII	6430
Chapter LXXXXXXXIV	6445
Chapter LXXXXXXXV	6460
Chapter LXXXXXXXVI	6475
Chapter LXXXXXXXVII	6490
Chapter LXXXXXXXVIII	6505
Chapter LXXXXXXXIX	6520
Chapter LXXXXXXXI	6535
Chapter LXXXXXXXII	6550
Chapter LXXXXXXXIII	6565
Chapter LXXXXXXXIV	6580
Chapter LXXXXXXXV	6595
Chapter LXXXXXXXVI	6610
Chapter LXXXXXXXVII	6625
Chapter LXXXXXXXVIII	6640
Chapter LXXXXXXXIX	6655
Chapter LXXXXXXXI	6670
Chapter LXXXXXXXII	6685
Chapter LXXXXXXXIII	6700
Chapter LXXXXXXXIV	6715
Chapter LXXXXXXXV	6730
Chapter LXXXXXXXVI	6745
Chapter LXXXXXXXVII	6760
Chapter LXXXXXXXVIII	6775
Chapter LXXXXXXXIX	6790
Chapter LXXXXXXXI	6805
Chapter LXXXXXXXII	6820
Chapter LXXXXXXXIII	6835
Chapter LXXXXXXXIV	6850
Chapter LXXXXXXXV	6865
Chapter LXXXXXXXVI	6880
Chapter LXXXXXXXVII	6895
Chapter LXXXXXXXVIII	6910
Chapter LXXXXXXXIX	6925
Chapter LXXXXXXXI	6940
Chapter LXXXXXXXII	6955
Chapter LXXXXXXXIII	6970
Chapter LXXXXXXXIV	6985
Chapter LXXXXXXXV	7000
Chapter LXXXXXXXVI	7015
Chapter LXXXXXXXVII	7030
Chapter LXXXXXXXVIII	7045
Chapter LXXXXXXXIX	7060
Chapter LXXXXXXXI	7075
Chapter LXXXXXXXII	7090
Chapter LXXXXXXXIII	7105
Chapter LXXXXXXXIV	7120
Chapter LXXXXXXXV	7135
Chapter LXXXXXXXVI	7150
Chapter LXXXXXXXVII	7165
Chapter LXXXXXXXVIII	7180
Chapter LXXXXXXXIX	7195
Chapter LXXXXXXXI	7210
Chapter LXXXXXXXII	7225
Chapter LXXXXXXXIII	7240
Chapter LXXXXXXXIV	7255
Chapter LXXXXXXXV	7270
Chapter LXXXXXXXVI	7285
Chapter LXXXXXXXVII	7300
Chapter LXXXXXXXVIII	7315
Chapter LXXXXXXXIX	7330
Chapter LXXXXXXXI	7345
Chapter LXXXXXXXII	7360
Chapter LXXXXXXXIII	7375
Chapter LXXXXXXXIV	7390
Chapter LXXXXXXXV	7405
Chapter LXXXXXXXVI	7420
Chapter LXXXXXXXVII	7435
Chapter LXXXXXXXVIII	7450
Chapter LXXXXXXXIX	7465
Chapter LXXXXXXXI	7480
Chapter LXXXXXXXII	7495
Chapter LXXXXXXXIII	7510
Chapter LXXXXXXXIV	7525
Chapter LXXXXXXXV	7540
Chapter LXXXXXXXVI	7555
Chapter LXXXXXXXVII	7570
Chapter LXXXXXXXVIII	7585
Chapter LXXXXXXXIX	7600
Chapter LXXXXXXXI	7615
Chapter LXXXXXXXII	7630
Chapter LXXXXXXXIII	7645
Chapter LXXXXXXXIV	7660
Chapter LXXXXXXXV	7675
Chapter LXXXXXXXVI	7690
Chapter LXXXXXXXVII	7705
Chapter LXXXXXXXVIII	7720
Chapter LXXXXXXXIX	7735
Chapter LXXXXXXXI	7750
Chapter LXXXXXXXII	7765
Chapter LXXXXXXXIII	7780
Chapter LXXXXXXXIV	7795
Chapter LXXXXXXXV	7810
Chapter LXXXXXXXVI	7825
Chapter LXXXXXXXVII	7840
Chapter LXXXXXXXVIII	7855
Chapter LXXXXXXXIX	7870
Chapter LXXXXXXXI	7885
Chapter LXXXXXXXII	7900
Chapter LXXXXXXXIII	7915
Chapter LXXXXXXXIV	7930
Chapter LXXXXXXXV	7945
Chapter LXXXXXXXVI	7960
Chapter LXXXXXXXVII	7975
Chapter LXXXXXXXVIII	7990
Chapter LXXXXXXXIX	8005
Chapter LXXXXXXXI	8020
Chapter LXXXXXXXII	8035
Chapter LXXXXXXXIII	8050
Chapter LXXXXXXXIV	8065
Chapter LXXXXXXXV	8080
Chapter LXXXXXXXVI	8095
Chapter LXXXXXXXVII	8110
Chapter LXXXXXXXVIII	8125
Chapter LXXXXXXXIX	8140
Chapter LXXXXXXXI	8155
Chapter LXXXXXXXII	8170
Chapter LXXXXXXXIII	8185
Chapter LXXXXXXXIV	

# CONVENIENT KITCHENS

JULIA POND AND HELEN NOYES

Sometime during her life every homemaker may be confronted with the remodeling or improving of an old kitchen or the planning of a new one. If satisfaction is to result, careful planning is essential. The purpose of this bulletin is to give concisely and clearly the fundamentals so necessary to reach the goal of a convenient kitchen.

Because the kitchen plays so prominent a part in family life, the planning of it should be given every consideration possible. In the majority of cases homemaking is still a full-time job. Statistics prove that up to 45 per cent of the homemaker's working day is spent in the kitchen. This fact alone justifies every reasonable expenditure of money used in the improvement of this room. A well-planned kitchen means less time required for work done in that part of the house and more time possible for the other homemaking duties as well as for leisure time activities and family companionship. It may also promote a more wholesome optimistic mental attitude in the homemaker.

Factors that determine the convenience of any kitchen are;

1. Location of kitchen in relation to other rooms of the house.
2. Number of different activities carried on in the kitchen.
3. Size and shape of the kitchen.
4. Number, size and location of doors and windows in relation to light, ventilation and arrangement of equipment.
5. Source and type of water supply.
6. Amount and type of equipment.
7. Arrangement and grouping of both large and small equipment.
8. Amount and location of working and storage space.
9. Height of large equipment.

## LOCATION OF KITCHEN

The kitchen should be conveniently located in relation to a back or outside entrance, to cellar or basement and to dining space or room. It should also not be too far from the front entrance and main floor bathroom.

## SIZE AND SHAPE

The small square and narrow rectangular kitchens are preferable from the standpoint of arrangement of equipment. The kitchen may vary in size from approximately 105 to 180 square feet, depending upon the

Recognition is given C. H. Jefferson of Michigan State College Agricultural Engineering Department for aid in preparation of this bulletin.

number of activities carried on in it and the size of the family. A kitchen narrower than  $6\frac{1}{2}$  or 7 feet will not permit equipment being placed on both sides. If equipment is not so placed wasted space and unnecessary steps result.

#### OPENINGS

The number, size, shape and location of the windows in a kitchen often determine the efficiency. Windows are necessary for adequate light and ventilation as is illustrated in Fig. 1. They should be placed at least 45 inches from the floor and in a position which will not interfere with the placing of wall cupboards. Although windows on opposite



Fig. 1. The two windows provide adequate light and cross-ventilation. The electric fan in the wall above the refrigerator quickly rids the kitchen of undesirable odors. (Another view of the kitchen in Fig. 18.)

walls are desirable whenever possible, many of the more modern kitchens have corner windows (Fig. 19). For the average size kitchen two windows are sufficient. If the light is not too strong the windows may be placed directly over the sink or work-table. The more unbroken wall space one has in a kitchen, the greater are the possibilities for a convenient arrangement.



Fig. 2. The staple supplies and equipment necessary in a mixing center are stored in this kitchen cabinet.

The kitchen should not be a hallway and the doors should be located with that point in mind. Because of that and also because of the placing of large equipment there should be not more than two or three doors. Those should be grouped closely together, preferably in one corner or on one side of the room. (See Figs. 21, 22, 24, and 25.)

#### WATER SUPPLY

The source of the water supply should be in the kitchen if possible. The most convenient source is at a kitchen sink which is conveniently grouped with the other large pieces of equipment and not in a far

corner of the kitchen. A supply of both hot and cold water will save many steps each day. The sink should be equipped with a drain adequate for disposing of all waste water from the kitchen.

#### EQUIPMENT

There should be ample equipment of the size and type suited to each particular home. The essential pieces of large equipment are a stove, sink, storage cupboards, refrigerator, and working space. These articles and the small equipment should meet the needs of the family, be within



Fig. 3. This cupboard is placed next to the refrigerator and a few steps from the sink. The doors are hinged so that the entire cupboard opens wide and everything is accessible. Here are stored the staple foods and equipment necessary when such foods as a cake or biscuits are to be mixed. Notice the pockets on the door (graduated in size) where spices are stored and the vertical shelves for storing the pie and cake pans.



the budget in both initial and operating cost, be easy to operate and to keep in repair.

One very important characteristic of the stove, sink and working space is that all be the proper height for the person using them the most. The best test for this height is that it will permit the person to work without stooping or stretching. Try out several heights before



Photo, Courtesy Farmers Wife Magazine.

Fig. 4. Storage center. Perishable foods are kept in the refrigerator and supplies and equipment in the cupboards. The knife rack is placed on one end of the cupboard just to the right of sink. The space above the refrigerator provides storage for seldom used articles.

you decide which one is best for you and then have your equipment adjusted to that height. Working space varies in height from 32 to 36 inches from the floor, depending upon height of worker and type of work to be done. Castors, furniture rests, blocks or platforms of wood can all be used to increase the height of such pieces as the stove, portable tables, cabinet, and stool.

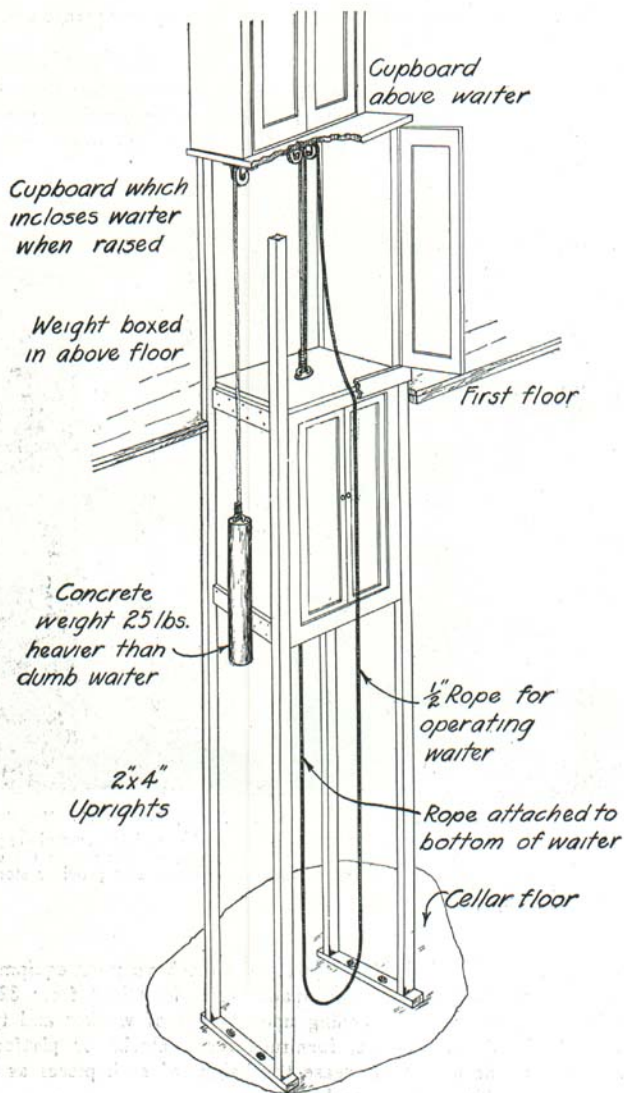


Fig. 5. Shows a dumbwaiter enclosed in a case. This type is very satisfactory and can be installed by the local carpenter.

### KITCHEN CENTERS

The necessary working centers in a well-planned kitchen are food preparation, cooking and serving, and clearing away and dishwashing. The business center is rapidly becoming the fourth of the essential centers of the convenient kitchen. A dining or eating area is frequently found in the larger kitchens. When each center in itself is properly equipped and the different centers are grouped in an orderly manner the kitchen will be convenient.

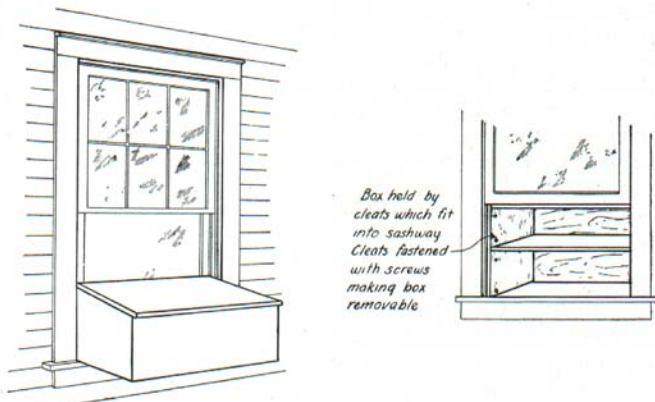


Fig. 6. A box for food attached outside a window sill saves many steps during the cool months.

### FOOD PREPARATION CENTER

The efficient food preparation center must contain a refrigerator or substitute, storage cupboards for staple foods and small equipment used in the preparation of food, working space, and a sink equipped with a drain and hot and cold water.

The storage space for the perishable foods such as milk, eggs and butter may be a mechanical refrigerator, an ice refrigerator, a ventilated cupboard, a dumb waiter, or window box (Figs. 1, 5, 6, and 7).

The work table space can be part of the cupboard for small equipment and staple foods. Preparation cutlery, pie pans, cake and bread pans, cookie sheets, strainers, sifters, graters, food chopper, flour and sugar can be kept in the lower or floor cupboard. In the wall cupboard above can be stored spices, extracts, cornstarch, soda, salt, baking

powder, dried fruits, raisins, measuring cups, spoons, and mixing bowls. (Figs. 2, 3 and 10.)

#### **COOKING AND SERVING CENTER**

The large pieces of equipment necessary in a cooking and serving center are a stove, cupboard for storing utensils and supplies used at the stove, and table space on which the serving dishes may be placed.

The storage space near the stove should provide space for tea, coffee, salt, pepper, small quantities of flour and sugar, coffee and tea pots, large spoons and forks, potato masher, frying pans, saucepans, pot covers, hot pads, serving platters, vegetable dishes and any other small equipment used near the stove. It is more convenient to hang the small equipment on hooks rather than to store it in stacks on shelves. The spoons, forks, potato masher, and similar pieces may hang on the inside of the cupboard door. Vertical partitions should be provided for storing the pot covers and vegetable platters. The serving space may be the table top of the floor cabinet near the stove or if there is no cabinet near the stove, a service wagon or small portable table may provide this space. On some electric, gas, and kerosene ranges the flat top of the oven provides sufficient serving space.

#### **CLEARING UP AND DISHWASHING CENTER**

Because the sink is the center of the dishwashing area as well as a part of the preparation center there should be space on one side to stack soiled dishes and on the other side space to drain and a cupboard in which to store the clean dishes. For a right-handed person the dish washing process will proceed from right to left. For a left-handed person the process should proceed from left to right (Fig. 12). Do not overlook this point when selecting and installing a sink and dish cupboards.

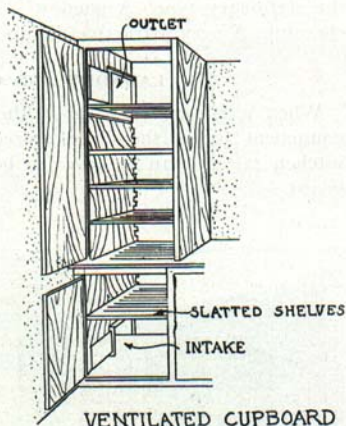
#### **SINK**

The sink equipped with hot and cold water and a drain saves more steps in the kitchen than any other piece of equipment.

Sinks can be several types: There is the double sink which is composed of two small sinks each having a drain but one center tap furnishing water for both. Dishes are washed in one section and drained in the other. The sink may be of the single type with or without drain

boards. There may be one or two drain boards. For a right-handed person the one drain board should be at the left of the sink. For the typical left-handed person the one drain board should be at the right. The sink may be of the apron type which fits in between the cupboards or the type without the apron which is set into the cupboard top. The sink may be the cabinet type with cupboard space below, or the space below the sink may be left open (Figs. 12, 14, 18 and 19).

When the space below the sink is enclosed and ventilated, the soap, cleaning powders, dish pan, and dish drainer can be stored there. In some instances two or three days' supply of potatoes or other vegetables can also be kept in the space under the sink. There should be near the sink a drawer for clean tea and kitchen hand towels and dish cloths, and a place to hang those in use. The knives, vegetable brushes, dish drainer, cutting board, and saucepans in which vegetables are cooked should also be kept in the cupboard near the sink.



**VENTILATED CUPBOARD**

Courtesy, United States Dept. Agriculture.  
Fig. 7. Refrigerator substitute.

#### BUSINESS OR PLANNING CENTER

If at all possible, some provision should be made for a business or planning center in every kitchen. It may consist of a specially built desk and chair. Hanging book shelves, the portable table and one of the kitchen chairs make a usable business center which is not expensive (Fig. 15). Often a rigidly hinged leaf, which may enclose shelves when in place and a kitchen chair make a satisfactory arrangement. This center need not be costly or require much space but one is desirable in every kitchen. It provides a space to store receipts, receipted bills and the home account books, as well as a convenient space in which to enter accounts, and make out the grocery list or the menus for the week.

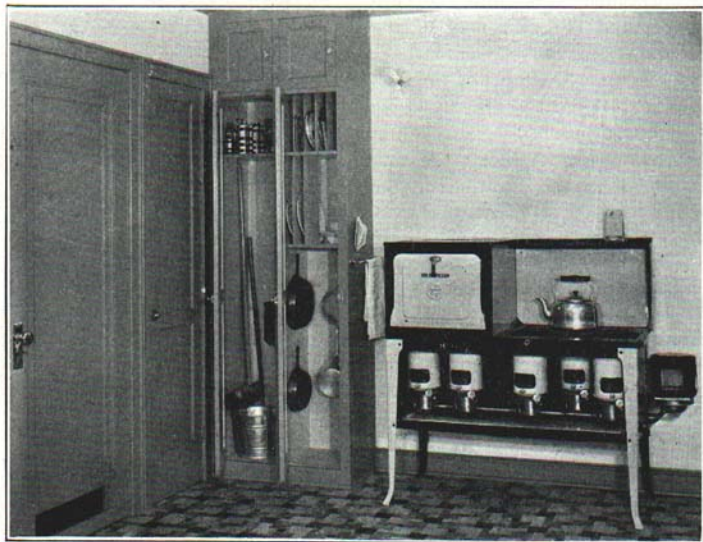
#### DINING CENTER

When the dining area is located in the kitchen it should be away from the three main work centers and not a part of them. Preferably it should include table and chairs which can be moved rather than

the stationary type. A window near this area always makes it more cheerful. A very attractive dining center is shown in Fig. 16.

#### LAUNDRY AND OTHER CENTERS

When it is necessary to do the laundry work in the kitchen the equipment for it should be stored away from main centers of the kitchen rather than be crowded between the range and storage cupboard.



Photo, Courtesy Farmers Wife Magazine.

Fig. 8. A cooking center. The one cupboard to the left of the range provides space for storing utensils and supplies used at the range. Notice that the frying pans and sauce pans hang while the kettle covers, vegetable platters and dishes are stored in the "pigeon holes" or vertical shelves. The cleaning supplies and equipment used in the kitchen are stored in the corner cupboard.

It is advisable whenever possible to have a service hall or room (Figs. 22, 24, and 25) in which to do the laundry, store every day wraps and provide a place for the men to wash.

The cleaning equipment closet may also be located in this room if there is not space in one corner of the kitchen. It too should never be grouped between the pieces of large equipment (Figs. 8, 16, and 20).

**ARRANGEMENT OF CENTERS**

These general rules should be observed in grouping equipment, no matter what the type of arrangement: 1. Group large equipment in appropriate centers.

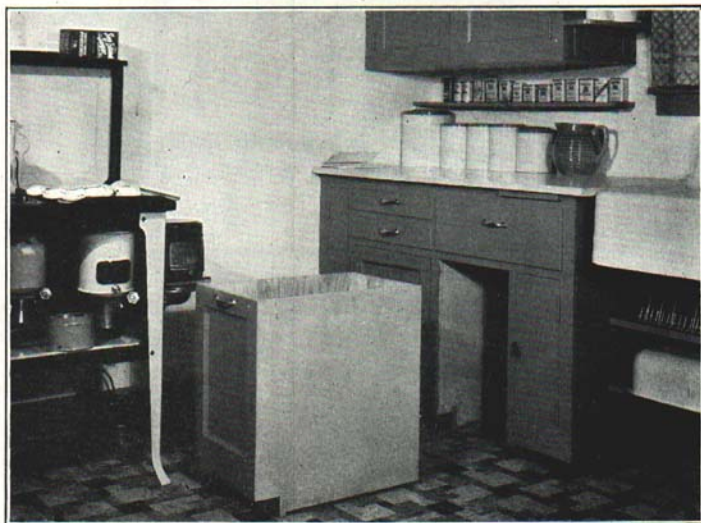


Fig. 9. In this cupboard above the range are stored the cereals, tea, coffee, sugar, flour, teapot, coffee pot and toaster.

2. Group the three essential centers in the order in which the work proceeds. Avoid as little back-tracking as possible and thus save steps. Work usually proceeds best from right to left, but a left to right grouping may be just as satisfactory.

3. Store small equipment near the working surface upon which it is to be used first.

If the foregoing rules are followed the result will be a U or corner arrangement. Usually the large equipment will be grouped in this manner; refrigerator, food preparation cupboard and work table space, sink, dish cupboard, range, cupboard for utensils and supplies used at range and serving space. Quite frequently the refrigerator is near the outside door and always if possible the range is near the dining room door or dining center (Figs. 18, 19, 20, 21, 22, 24, and 25).

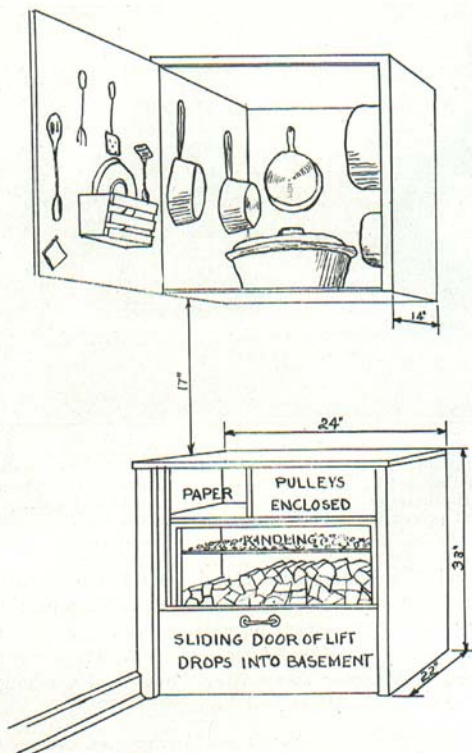


Photo, Courtesy Farmers Wife Magazine.

Fig. 10. Notice the few steps between the sink, food preparation cupboard and range. This type of bin wastes no space because it is flat and box-like at the bottom. It does not need to be supported when open and will not bang shut. The large rubber-tired, ball-bearing castors make it easily moved.

Studies made in Vermont give these very convincing results for the person who is in doubt about the importance of a compact orderly grouping of equipment. In an improved kitchen 131 steps and 2 hours and 6 minutes were sufficient to accomplish work which required 1,516 steps and 3 hours 46 minutes in the unimproved kitchen. These reductions effected a release of 45 per cent of the homemaker's time and the elimination of 91 per cent of the steps. In one kitchen 152 steps were





Courtesy, United States Department Agriculture.

Fig. 11. A storage cupboard for utensils and supplies used at the stove, a serving area and fuel box.

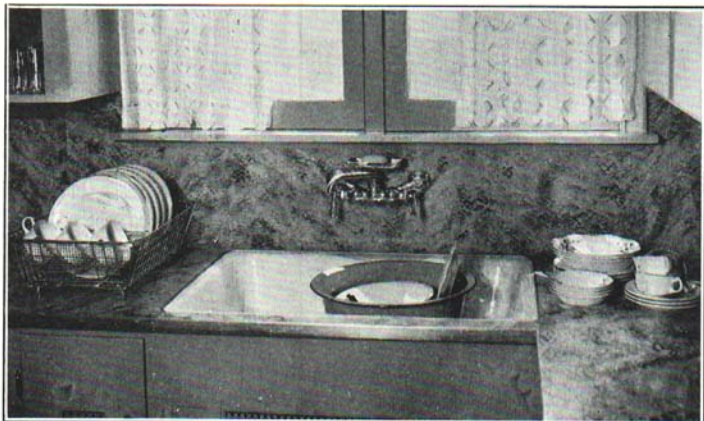


Fig. 12. A clearing away and dish washing center. The soiled dishes are stacked at the right, the dishes washed in the sink, drained in the dish drainer at the left and placed in the cupboard just above the sink. This arrangement saves time and energy because the process proceeds in a logical orderly manner. For the left-handed person the arrangement should be reversed.

eliminated and 17 minutes were saved from the preparation, serving, and cleaning up of one meal due entirely to the compact arrangement of large equipment. Time spent in making a one-egg cake was reduced from 12 minutes to  $5\frac{1}{4}$ , while 80 per cent of the steps were eliminated. In the process of clearing away after dinner and washing the dishes the number of steps was decreased from 559 to 195.<sup>1</sup>

<sup>1</sup>Muse, Marianne—Kitchen Equipment and Arrangement. Vermont Agricultural Experiment Station.

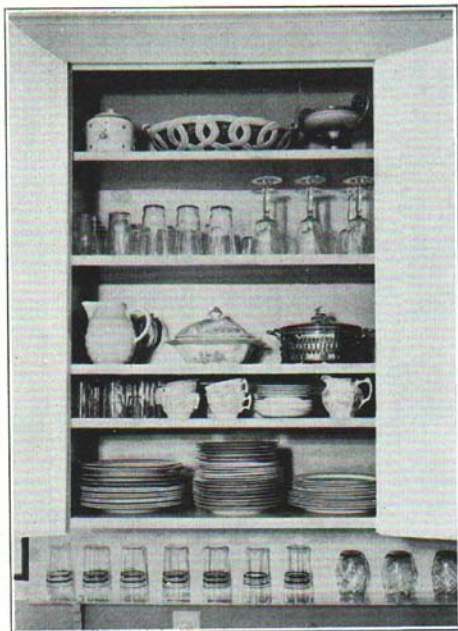


Fig. 13. A dish cupboard in which the shelves are spaced to fit the articles to be stored.



—Photo Courtesy, Farmers Wife Magazine.

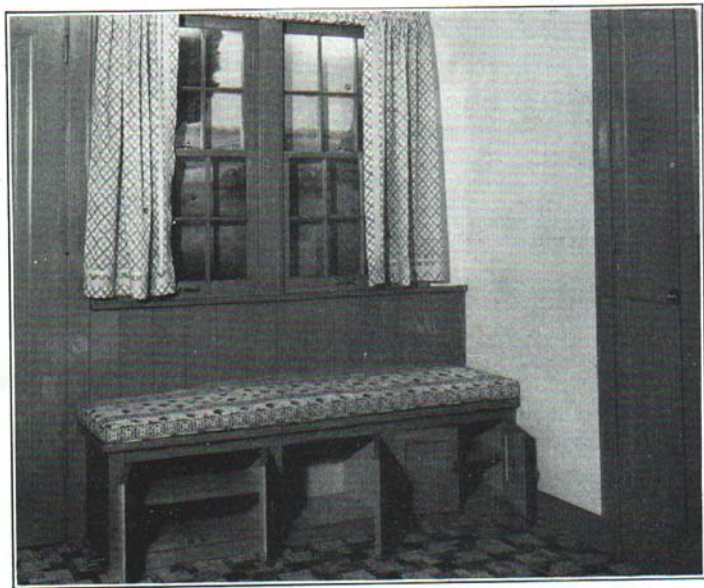
Fig. 14. A kitchen sink which is located beneath two windows and between the kitchen cupboards. Equipment and supplies used at the sink are within easy reach—the knives are on the rack at the right, soap and cleaning powder on narrow shelves at the end of the cupboard on the left, dish pan and dish drainer on shelves below the sink, garbage can and waste paper basket under the sink, the vegetable brush, and dish mop on hooks at lower left and right of sink.



Fig. 15. A business or planning center. A section of the open shelves provides space for books and files. Writing space is obtained by using the bread board and lower shelf of the cupboard.



Fig. 16. An attractive and cheerful dining center in one end of the kitchen. Notice the outlet for the toaster or waffle iron, the cleaning closet in the corner, and the drop-leaf serving space beside the stove.



Photo, Courtesy Farmers Wife Magazine.

Fig. 17. Window seat located in the dining end of the kitchen. The storage space below the seat is an excellent place in which to keep toys, rubbers, roller skates, and similar articles.

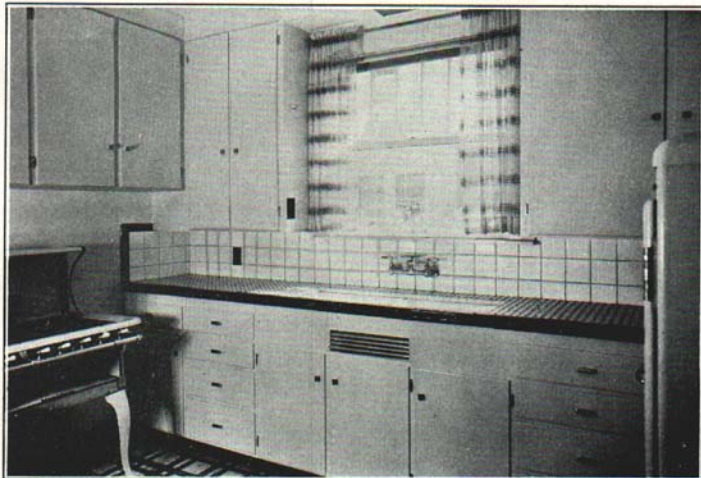


Fig. 18. A compact convenient kitchen arrangement. Notice these features: light in ceiling above sink, wall outlets for small electrical equipment, cupboards on wall space over the range, glazed tile working surface, double sink, ventilated cupboard below sink, and toe space at bottom of cupboard.

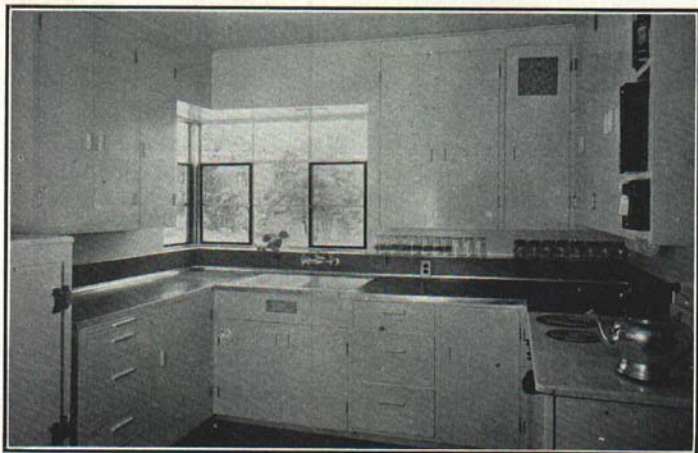
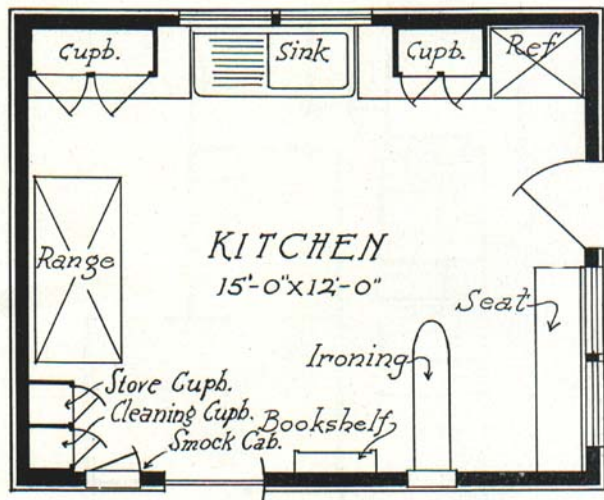


Fig. 19. An example of a U-shaped kitchen arrangement in which adequate storage and working space is conveniently and compactly grouped.





Courtesy, Farmers Wife Magazine.

Fig. 20. Kitchen floor plan.

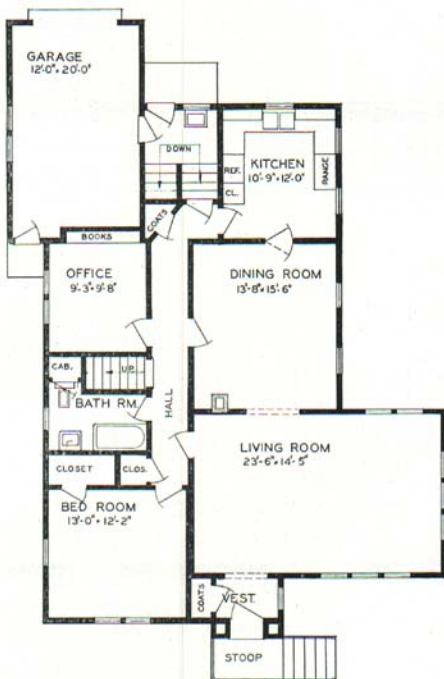


Fig. 21. Remodeled house plan. Note the convenient kitchen arrangement.

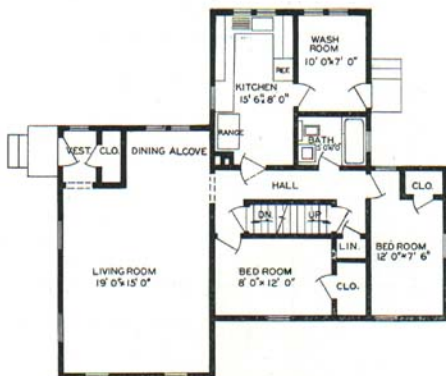


Fig. 22. House plans of a remodeled farm home. Note the convenient kitchen and dining alcove.

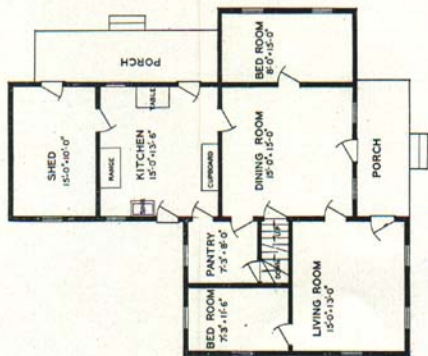


Fig. 23. Original house plan. Note the poorly arranged kitchen.

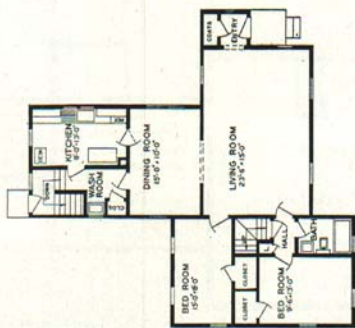


Fig. 24. The remodeled house plan of Fig. 23. Note the convenient kitchen arrangement.

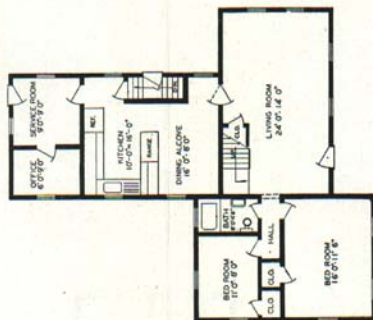


Fig. 25. Another remodeled house plan of Fig. 23. Note the convenient kitchen arrangement.

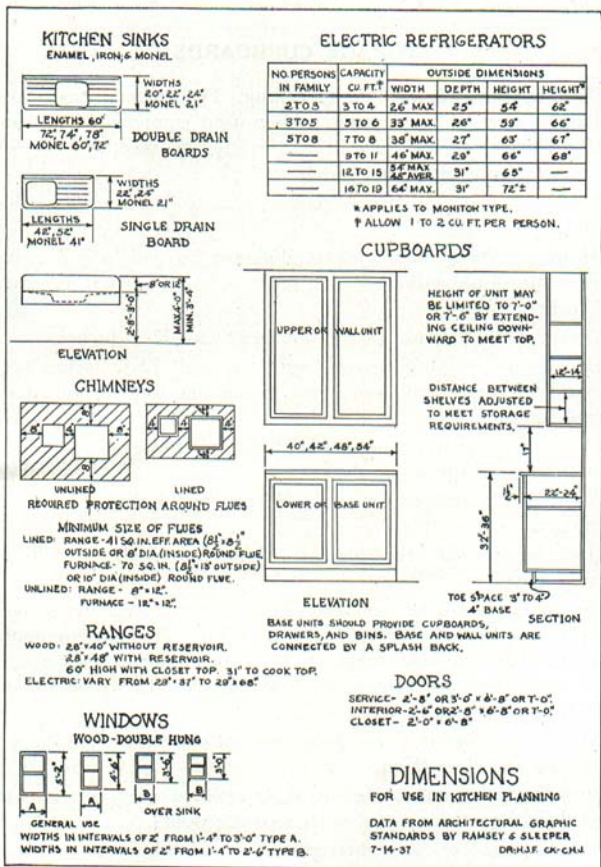


Fig. 26. Standard measurements.

### STORAGE CUPBOARDS

1. Build cupboard from floor to ceiling. The extreme top space can always be used for storing seldom-used equipment and supplies. If desirable, ceiling may be constructed to meet the top of the cupboard to avoid a dust-catcher.
2. Floors of lower cupboards should be 2 to 4 inches above floor of room.
3. Allow for "toe" room by extending top beyond base 3 inches, or make top flush with base and push in board at base of cupboard 3 inches.
4. Lower cabinet should extend out from wall 22-25 inches.
5. Upper cabinet should extend out from wall 12-13 inches (outside measurements) or be as narrow as possible for storing articles in cupboard.
6. Shelves just wide enough to hold glasses, cups and spices may be built between the wider shelves.
7. Allow 14-18 inches between table top and lower shelf of upper cabinet.
8. Have work table top correct height for worker—32-36 inches from floor.
9. Doors should not be too wide. Doors on upper cabinet should not swing out beyond edge of the work table. Two narrow doors are better than one wide one. A 10-12-inch door is best for doors of upper cupboard. Doors for lower cupboard may be as wide as 15-18 inches.
10. Hinge doors on the side that is the most convenient for the worker to open and close them.
11. Shelves that cannot be conveniently reached when one is standing on floor may be enclosed with separate doors.
12. Allow space between shelves and for depth of drawers so as little stacking as possible will be necessary. Drawers may vary in depth from 3 to 10 inches. The space between shelves may vary from 4 to 15 inches.
13. Movable trays are more convenient than shelves in compartments below work table space.
14. Vertical shelves or "pigeon holes" are a convenient and satisfactory way of storing pie, cake, and muffin pans, trays and lids.

15. Provide knife rack for kitchen knives. This rack may hang on the wall, inside of a cupboard door or be fitted into a drawer.
16. Storage space for bread and cake should be metal lined and ventilated. A drawer may be built for this purpose.
17. Drawers may be used as bins. For food stored in 25-pound lots, large drawers with movable metal insets are preferable to small drawer.
18. If bins are used they should be of the type not hinged at the bottom but ones that can roll out into the room and not need to be supported by the worker.
19. Whenever possible, hang kitchen utensils rather than stack them on shelves.
20. If small articles are to be hung on the inside of the cupboard door equipped with shelves, the shelves should be 3-4 inches narrower than the cupboard itself.
21. More efficient use can be made of the hanging space on the inside of a door or a cupboard if hooks can be placed wherever desired rather than on one certain strip or section.

